

Quick Start Guide

Package Contents

MeshAP 3800



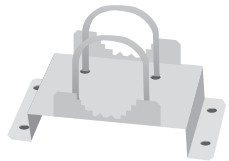
RJ-45 Connector (X1)



Coax-Seal (10")



Pole Mount Bracket (X1)
Hex screws (4)
Hex locknuts(4)
Washer(4)
2 3/8" diameter U-bolts (x2)
U-bolts Locknuts (4)
Ubolts Washer(4)

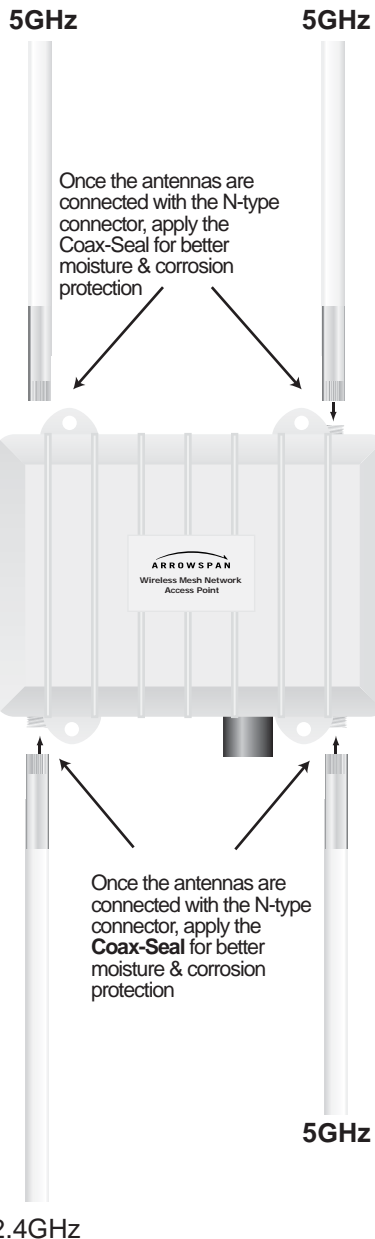


Lug for Grounding (x1)



Hardware Setup

1 Connect each antenna to an antenna socket



Once the antennas are connected with the N-type connector, apply the Coax-Seal for better moisture & corrosion protection

Once the antennas are connected with the N-type connector, apply the Coax-Seal for better moisture & corrosion protection

IMPORTANT: MUST Properly connect all antennas before powering "on" the unit (Permanent hardware failure may occur if instructions are not followed)

Lightning Arrestors
Lightning Arrestors MUST be used on all antennas to protect radio equipment from static electricity and lightning-induced surges in the environment.

Coax-Seal
moisture & corrosion



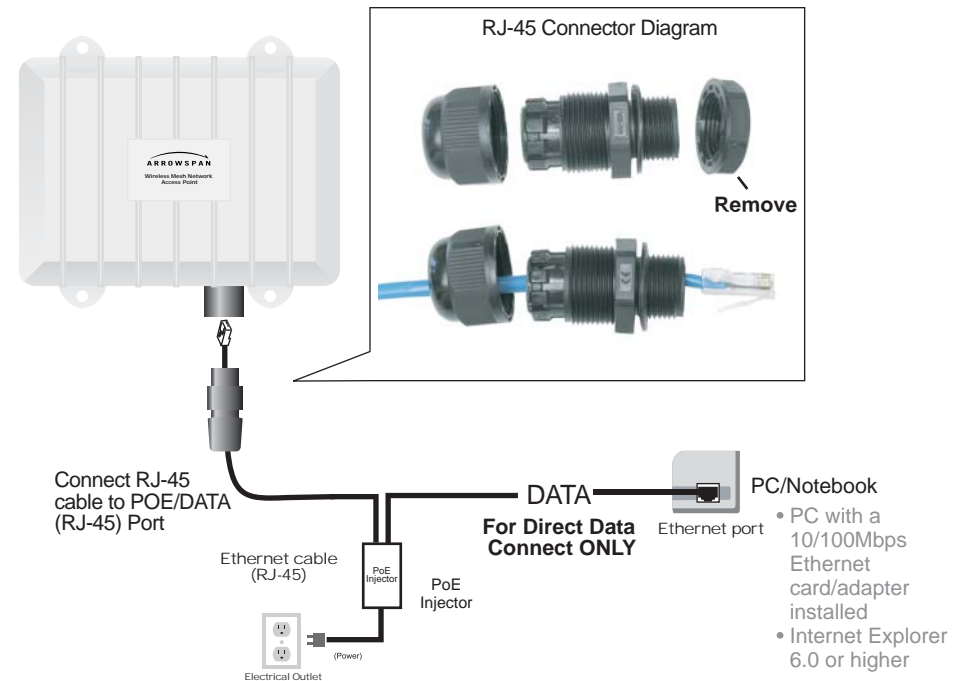
To apply - diagonally wrap a strip of Coax-Seal over a clean, dry connection making sure to overlap as you apply. Mold to form a smooth surface and to force out the air.

MeshAP 3800

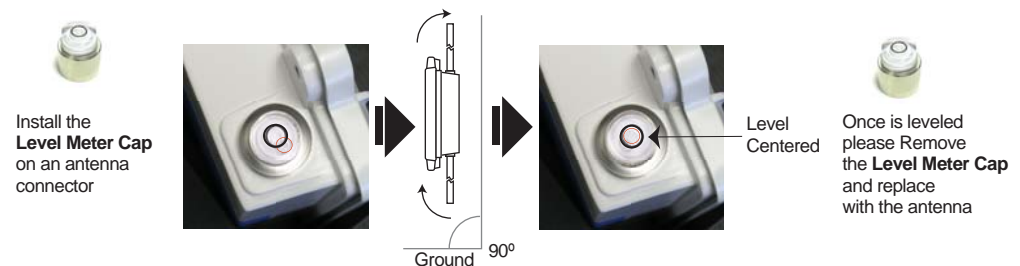
Dual-Radio WiFi Mesh Network Access Point



2 Connect one end of the Ethernet cable to the **Ethernet** port and another end to the POE (Power over Ethernet) injector



3 MeshAP must be 90° with the ground and 1m away from any hard wall to have good signal performance



Accessing the unit

1. Make sure PC or notebook IP address is set to: 192.168.1.xxx and subnet mask is set to: 255.255.255.0
2. Launch Web Browser (Internet Explorer or Firefox)
3. Enter 192.168.1.8 at the address bar of the web browser and press Enter to access the Access Point
4. UserName: admin Password: admin Click "OK"

How to Clear ARP Table for IP Conflict

To clear the ARP table of a Microsoft Windows system by issuing the following command, `arp -d` in command prompt

